

CLASSICS OF THE TWENTIES & THIRTIES

EVOCATIVE DESIGNS OF THE CHARLESTON ERA FROM SCANDECOR

• ROXY •

A comfortable high-backed range of settees with matching armchair, in Art Deco style. The sunburst effect on the back in contrasting piping is an attractive feature of the design.

ROXY DIMENSIONS - ins - (cms)			
	Width	Depth	Height
Chair	36½ - (92)	37 - (94)	31 - (78)
2 Seat Settee	55 - (140)	37 - (94)	33 - (84)
Large 2 Seat	67 - (170)	37 - (94)	33 - (84)
3 Seat	78 - (198)	37 - (94)	33 - (84)



SPECIFICATIONS

Frame: Kiln dried Beech
Back: Coil Sprung
Seat: No-sag Sinuous Springs
Cushions: Foam with Dacron Wrap

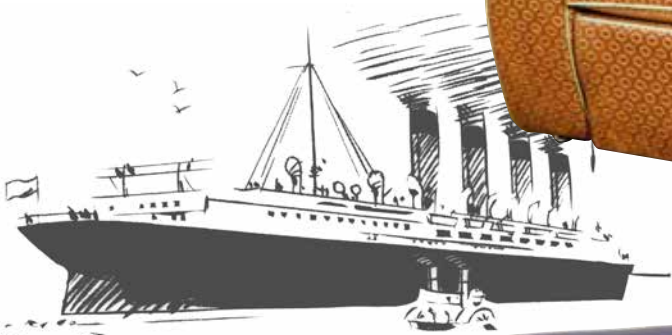
www.artdeco-sofas.com

• NORMANDIE •

The 1930's were the heyday of the great ocean liners. The SS Normandie was built to be an advertisement for French design, manufacturing expertise and craftsmanship. It was widely recognised as a floating showcase of the decorative arts and the list of craftsmen who worked on various aspects of the ship reads like a catalogue of the cream of Art Deco. The Normandie sailed on its maiden voyage in 1935; it caught fire and sank in New York Harbour in 1941 during World War 2. The sofas and chair that we feature are close copies of those used on the Normandie and available with cushion seats as illustrated or plain seats.



NORMANDIE DIMENSIONS - ins - (cms)			
	Width	Depth	Height
Chair	36 - (91)	36 - (91)	32 - (81)
2 Seat Settee	57 - (145)	36 - (91)	32 - (81)
Large 2 Seat	67 - (171)	36 - (91)	32 - (81)
3 Seat	76 - (193)	36 - (91)	32 - (81)



SPECIFICATIONS

Frame: Kiln-dried Beech

Seat & Back: Coil Sprung

Cushions: Choice of Foam with
Dacron Wrap, Feather or Fibre



Blue Sofa shown in Faux Leather



A new design from our Hollywood collection. Hollywood defined much of the popular culture of the 1930's and 1940's. Bogart was one of the Hollywood giants of the period along with Gable, Cagney, Cooper and the rest. Our Bogart sofas and chairs are spacious and comfortable, with clean, simple unpretentious lines.

BOGART DIMENSIONS - ins - (cms)			
	Width	Depth	Height
Chair	34 - (86)	36 - (91)	31½ - (80)
2 Seat Settee	55 - (140)	36 - (91)	31½ - (80)
Large 2 Seat	67 - (165)	36 - (91)	31½ - (80)
3 Seat	78 - (198)	36 - (91)	31½ - (80)



Illustrated in Black Lustrana Leather by Andrew Muirhead



The growth of the cinema as mass market entertainment was one of the defining developments of the 1930's and Odeon Cinemas appeared across the country. Our

Odeon Sofas and Chairs are possibly the archetypal 1930's styling, are spacious and comfortable.

SPECIFICATIONS

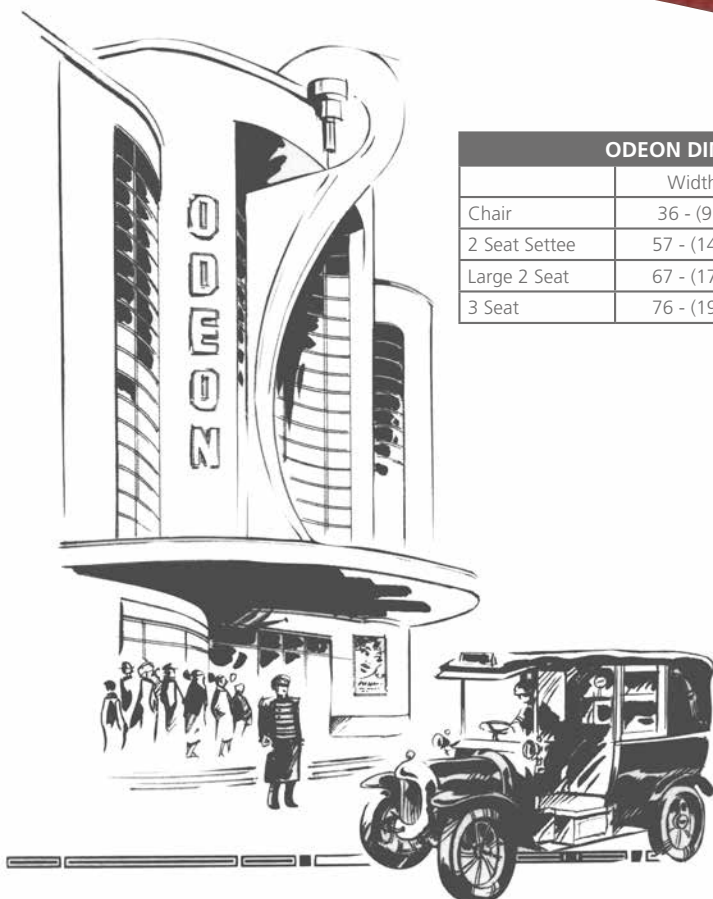
Frame: Kiln dried Beech

Seat & Back: Coil Sprung

Cushions: Foam with Dacron Wrap, or Feather/Fibre



ODEON DIMENSIONS - ins - (cms)			
	Width	Depth	Height
Chair	36 - (91)	36 - (91)	31 - (78)
2 Seat Settee	57 - (145)	36 - (91)	31 - (78)
Large 2 Seat	67 - (171)	36 - (91)	31 - (78)
3 Seat	76 - (193)	36 - (91)	31 - (78)





SPECIFICATIONS

Frame: Kiln dried Beech

Back: Coil Sprung

Seat: No-sag sinuous springs

Cushions: Foam with Dacron Wrap

RITZ DIMENSIONS - ins - (cms)			
	Width	Depth	Height
Chair	38 - (97)	37 - (94)	34 - (86)
2 Seat Settee	59 - (150)	37 - (94)	34 - (86)
Large 2 Seat	68 - (173)	37 - (94)	34 - (86)
3 Seat	80 - (203)	37 - (94)	34 - (86)



Distinctively 1930's styling. Big solid sofas and armchair - a superb design for a 20's or 30's style house, this style will look at its best in a generous sized room.

• ARCADIA •

Arcadia is a perfect reproduction of a 1930's Art Deco original with a distinctive arm shape. Very comfortable and since it is more compact than the Ritz or Manhattan, it is much easier to use the Arcadia in smaller houses and flats.



SPECIFICATIONS

Frame: Kiln dried Beech • Seat & Back: Coil Sprung
Cushions: Foam with Dacron Wrap, or Feather/Fibre

ARCADIA DIMENSIONS - ins - (cms)

	Width	Depth	Height
Chair	32 - (81)	35 - (89)	32 - (81)
2 Seat Settee	54 - (137)	35 - (89)	32 - (81)
2½ Seat	65 - (166)	35 - (89)	32 - (81)

• MANHATTAN •

Manhattan Sofa, shown here in one of a range of velours with contrasting piping. These are generous-sized sofas and chairs - typical of the 1930's.



SPECIFICATIONS

Frame: Kiln dried Beech
Back: Coil Sprung
Seat: No-sag sinuous springs
Cushions: Foam with Dacron Wrap

MANHATTAN DIMENSIONS - ins - (cms)

	Width	Depth	Height
Chair	38 - (97)	36 - (91)	33 - (84)
2 Seat Settee	59 - (150)	36 - (91)	33 - (84)
Large 2 Seat	68 - (173)	36 - (91)	33 - (84)
3 Seat	80 - (203)	36 - (91)	33 - (84)

*Illustrated in Flat-Pile Modern Velour
Choice of 50 colours*



• MIAMI •

Inspired by the outstanding Art Deco Buildings of Miami Beach. Similar to our Ritz Sofa but with a lower back and more streamlined appearance.



MIAMI DIMENSIONS - ins - (cms)			
	Width	Depth	Height
Chair	38 - (97)	37 - (94)	31½ - (80)
2 Seat	59 - (150)	37 - (94)	31½ - (80)
Large 2 Seat	68 - (173)	37 - (94)	31½ - (80)
3 Seat	80 - (203)	37 - (94)	31½ - (80)

• VAN ALLEN •

William Van Alen was the architect who designed the Chrysler Building in New York. Completed in 1930 this remains one of the most iconic Art Deco buildings in America. Our Van Alen sofas and chairs reflect the flamboyance of the Art Deco period.



SPECIFICATIONS

Frame: Kiln dried Beech • Back: Coil Sprung

Seat: No-sag springs • Cushions: Foam with Dacron Wrap

VAN ALLEN DIMENSIONS - ins - (cms)			
	Width	Depth	Height
Chair	43 - (109)	36 - (91)	38 - (98)
2 Seat Settee	61 - (155)	37 - (94)	37½ - (95)
2½ Seat	71 - (181)	37 - (94)	37½ - (95)
3 Seat	82 - (208)	37 - (94)	37½ - (95)

• ASTAIRE •

1930's Art Deco style sofa and armchair. An original and unusual style with distinctive arms, double bow front and knuckle feet.



SPECIFICATIONS

Frame: Kiln dried Beech

Seat & Back: Sprung

Cushions: Foam with Dacron Wrap

• VALENTINO TUB CHAIR



Versatile 1920's - style tub chair, produced in leather, fabric and faux leather.

VALENTINO CHAIR DIMENSIONS - ins - (cms)

	Width	Depth	Height
Chair	27 - (69)	28 - (71)	30 - (76)

ASTAIRE DIMENSIONS - ins - (cms)

	Width	Depth	Height
Armchair	34½ - (88)	36 - (91)	34 - (86)
2 Seat Sofa	56 - (143)	36 - (91)	34 - (86)
2½ Seat Sofa	65 - (165)	36 - (91)	34 - (86)

• GERSHWIN CHAISE LONGUE

Art Deco inspired Chaise Longue, available with right or left hand end.



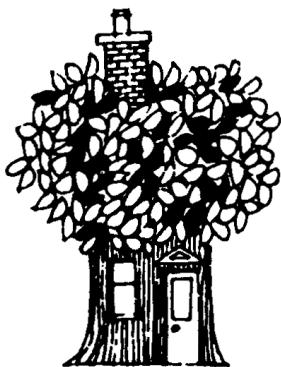
GERSHWIN DIMENSIONS - ins - (cms)

	Width	Length	O/A Height
Chaise Longue	30 - (76)	74 - (188)	35 - (87)
Seat height 18 - (46)			

SCANDECOR

20 Castle Street, Brighton
East Sussex BN1 2HD
Telephone: 01273 820208
Fax: 01273 737124

www.artdeco-sofas.com



SCANDECOR

20 CASTLE STREET, BRIGHTON, SUSSEX BN1 2HD

Telephone: Brighton (01273) 820208

Fax: Brighton (01273) 737124

www.artdeco-sofas.com

RETAIL PRICE LIST 2018

(INCLUDES FABRIC/LEATHER AND VAT)

Welcome to our collection of classic 20th century sofa and chair designs. Everything is hand-made to order to each customer's individual specifications, in our workshop in Brighton. We make excellent quality furniture; our sofas and chairs are made to last for many years. Our frames and spring units are guaranteed.

Scandecor is a family business which has been trading since 1967. It is a well-financed, trustworthy and reliable business.

CHOICE OF FABRICS: We offer a very wide choice of coverings and will cover our furniture in any fabric of your choice. The price of our sofas and chairs will vary according to the cost of the fabric. We quote prices for five different price grades of fabric.

FABRIC INFORMATION

Fabrics are priced in 5 price bands "A" to "E"

"A", "B" and "C" price bands are upholstery fabrics for normal domestic use.

"D" and "E" are mainly designed for heavy commercial use and not normally available for domestic furniture. You can expect to get long wear and excellent value from these fabrics for a modest extra outlay.

The Scandecor stock fabric range is in the "A" and "B" price bands and are mainly special purchases offering excellent value and a good choice of plain and patterned fabrics.

Plain Fabrics:

A good selection in all price bands. Velours, weaves, chenille, velvet, tweeds, linen etc.

Art Deco Selection:

All price bands. Patterned Fabrics: available for all models in all price bands.

FABRIC SAMPLES:

Sent on request - please state the colours you want (and don't want), whether plain or patterned, and which sofas you are interested in. Ask for a fabric sample application form.

LEATHER

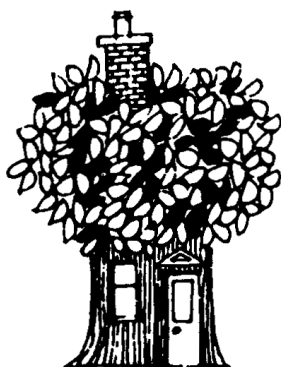
We use leather from the Scottish tannery of Andrew Muirhead, which is a very old established family business famous for quality leather. There is a choice of 60 plain colours and 8 semi antique colours, plus a limited range of distressed leathers. See our separate Leather Information leaflet. Our Leather furniture is particularly good value.

LEATHER SAMPLES

Sent on request - please state colours wanted and sofas in which you are interested.

FAUX LEATHER

Man-made leathers are the ideal product for anyone who likes the look of leather but would not consider buying any kind of animal skin for ethical reasons. They have a lot of the practical advantages of leather, although not so hard wearing, they resist scratches and scuffs much better than leather. There is also a cost advantage over leather - most faux leathers come into the "C" and "D" price category.



SCANDECOR

20 CASTLE STREET, BRIGHTON, SUSSEX BN1 2HD

Telephone: Brighton (01273) 820208

Fax: Brighton (01273) 737124

www.artdeco-sofas.com

RETAIL PRICE LIST 2018

(INCLUDES FABRIC/LEATHER AND VAT)

Standard specifications:
(1920's - 1930's Models)

Solid Beech Frames (all models) Sprung Seat (all models) Foam/Dacron Seat Cushions.
Coil Sprung Back (all models)

RITZ / MANHATTAN / SAVOY

MIAMI / BOGART / PLAZA

	"A"	"B"	"C"	"D"	"E"	LEATHER
3 Seat	£1135.00	£1195.00	£1275.00	£1325.00	£1399.00	£2250.00
2½ Seat	£1025.00	£1075.00	£1150.00	£1215.00	£1295.00	£1999.00
2 Seat	£ 950.00	£1010.00	£1075.00	£1125.00	£1195.00	£1850.00
Chair	£ 699.00	£ 755.00	£ 799.00	£ 835.00	£ 895.00	£1325.00

Extras: Knuckle Feet £45 per set of 4.

ARCADIA / ODEON / DALI / CHAPLIN

NORMANDIE / ZIEGFELD

	"A"	"B"	"C"	"D"	"E"	LEATHER
3 Seat	£1245.00	£1295.00	£1350.00	£1425.00	£1495.00	£2295.00
2½ Seat	£1125.00	£1195.00	£1250.00	£1295.00	£1395.00	£2050.00
2 Seat	£ 995.00	£1075.00	£1125.00	£1175.00	£1250.00	£1895.00
Chair	£ 740.00	£ 785.00	£ 825.00	£ 860.00	£ 899.00	£1375.00

Extras: Knuckle Feet £45 per set of 4.

ASTORIA / VAN ALEN

	"A"	"B"	"C"	"D"	"E"	LEATHER
3 Seat	£1185.00	£1225.00	£1295.00	£1350.00	£1425.00	£2350.00
2½ Seat	£1050.00	£1095.00	£1175.00	£1225.00	£1295.00	£2095.00
2 Seat	£ 975.00	£1025.00	£1075.00	£1125.00	£1195.00	£1950.00
Chair	£ 750.00	£ 795.00	£ 845.00	£ 895.00	£ 945.00	£1395.00

Extras: Knuckle Feet £40 per set of 4.

SWINGTIME

	"A"	"B"	"C"	"D"	"E"	LEATHER
2½ Seat	£1075.00	£1135.00	£1185.00	£1240.00	£1295.00	£2095.00
2 Seat	£ 995.00	£1050.00	£1095.00	£1175.00	£1225.00	£1950.00
Chair	£ 799.00	£ 835.00	£ 925.00	£ 950.00	£ 995.00	£1395.00

ROXY / ASTAIRE

	"A"	"B"	"C"	"D"	"E"	LEATHER
3 Seat	£1175.00	£1225.00	£1295.00	£1350.00	£1425.00	£2295.00
2½ Seat	£1050.00	£1095.00	£1175.00	£1225.00	£1295.00	£2050.00
2 Seat	£ 975.00	£1025.00	£1075.00	£1125.00	£1195.00	£1950.00
Chair	£ 750.00	£ 795.00	£ 825.00	£ 875.00	£ 925.00	£1350.00

Extras: Knuckle Feet £40 per set of 4.

BROOKLANDS / LUNAR

	"A"	"B"	"C"	"D"	"E"	LEATHER
3 Seat	£1240.00	£1395.00	£1485.00	£1585.00	£1675.00	£2450.00
2½ Seat	£1125.00	£1195.00	£1275.00	£1350.00	£1399.00	£2150.00
2 Seat	£ 999.00	£1095.00	£1150.00	£1225.00	£1275.00	£1950.00
Chair	£ 799.00	£ 895.00	£ 925.00	£ 955.00	£ 995.00	£1495.00

ART DECO MISCELLANY

	"A"	"B"	"C"	"D"	"E"	LEATHER
Gershwin Chaise Longue	£899.00	£965.00	£995.00	£1050.00	£1095.00	£1875.00
Waldorf Tub Chair	£599.00	£625.00	£650.00	£ 695.00	£ 725.00	£ 950.00
Normandie Stool	£295.00	£315.00	£325.00	£ 335.00	£ 345.00	£ 395.00
Art Deco Stool (Sunburst top)	£295.00	£315.00	£325.00	£ 335.00	£ 345.00	£ 395.00
Deco Bedroom Chairs	£315.00	£335.00	£355.00	£ 375.00	£ 395.00	£ 675.00
Normandie Stool (Sunburst top)	£295.00	£295.00	£325.00	£ 325.00	£ 325.00	£ 395.00

Sunburst/Sunrise Cushion

£75 (Fabric)

STOOLS: Box Pouffé with Legs or Bun Feet or Castors

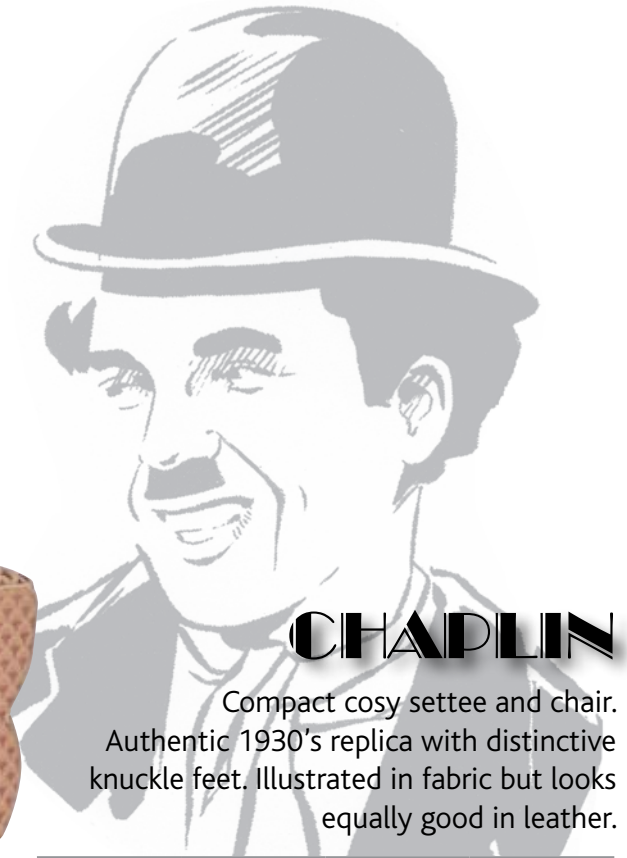
	"A"	"B"	"C"	"D"	"E"	LEATHER
20" x 20"	£270.00	£285.00	£299.00	£320.00	£340.00	£385.00
30" x 20"	£335.00	£355.00	£370.00	£390.00	£410.00	£495.00

ART DECO CLASSICS



Specifications

Frame: Kiln dried Beech Back: Coil sprung
Cushions: Foam with Dacron Wrap



CHAPLIN

Compact cosy settee and chair. Authentic 1930's replica with distinctive knuckle feet. Illustrated in fabric but looks equally good in leather.

Dimensions	Width	Depth	Height
Chair	36" (91cm)	36" (91cm)	34" (87cm)
2 Seat	55" (140cm)	36" (91cm)	34" (87cm)
Large 2 Seat	68" (173cm)	36" (91cm)	34" (87cm)
3 Seat	77" (196cm)	36" (91cm)	34" (87cm)



Large 2 Seat

MIAMI

Inspired by the outstanding Art Deco Buildings of Miami Beach. Similar to our Ritz Sofa but with a lower back and more streamlined appearance.



Dimensions	Width	Depth	Height
Chair	39" (99cm)	37" (94cm)	31 1/2" (80cm)
2 Seat	60" (152cm)	37" (94cm)	31 1/2" (80cm)
Large 2 Seat	69" (175cm)	37" (94cm)	31 1/2" (80cm)
3 Seat	80" (203cm)	37" (94cm)	31 1/2" (80cm)

SAVOY

Savoy is the smallest of our Art Deco Models making it particularly suitable for smaller rooms. Looks good in fabric or leather and there is a choice of chrome gliders, knuckle feet or bun feet.

Specifications

Frame: Kiln dried Beech, screwed, glued and dowelled

Seat and Back: Fully sprung

Cushions: Foam with Dacron Wrap or feather and fibre



Dimensions	Width	Depth	Height
Chair	32" (83cm)	36" (91cm)	33" (84cm)
2 Seat	53" (135cm)	36" (91cm)	33" (84cm)
Large 2 Seat	62" (158cm)	36" (91cm)	33" (84cm)
3 Seat	73" (186cm)	36" (91cm)	33" (84cm)

WALDORF

Multi-purpose Art Deco Style Tub Chair

Width	Depth	Height	Seat Height
27" (69cm)	28" (71cm)	30" (76cm)	17 1/2" (45cm)



ART DECO DINING CHAIR



Art Deco Dining Chairs can be covered in leather, fabric or faux leather.

Legs can be polished in a variety of wood finishes or can be lacquered at extra cost.

Width	Depth	Height	Seat Height
39" (99cm)	19" (48cm)	20" (50cm)	18 1/2" (47cm)

• SCANDÉCOR •

CLASSIC SOFAS from SCANDENOR

ASTORIA

Unmistakably Art Deco, large, comfortable 1930's style sofas with matching armchair. A striking design that looks equally grand in leather or fabric.



Astoria Dimensions

	WIDTH	DEPTH	HEIGHT
2 Seat Sofa	67" (170cm)	37" (94cm)	35" (89cm)
2½ Seat Sofa	77" (196cm)	37" (94cm)	35" (89cm)
3 Seat Sofa	87" (221cm)	37" (94cm)	35" (89cm)
Chair	43" (110cm)	37" (94cm)	35" (89cm)



20 Castle Street • Brighton • East Sussex BN1 2HD
Tel: 01273 820208 • Fax: 01273 737124

DALI

A design inspired by one of the great eccentrics of the Twentieth Century

Dali Dimensions

	WIDTH	DEPTH	HEIGHT
2 Seat Sofa	58" (147cm)	38" (97cm)	31 ¹ / ₂ " (80cm)
Large 2 Seat Sofa	69" (175cm)	38" (97cm)	31 ¹ / ₂ " (80cm)
3 Seat Sofa	79" (201cm)	38" (97cm)	31 ¹ / ₂ " (80cm)
Chair	34" (86cm)	38" (97cm)	31 ¹ / ₂ " (80cm)



Sofa covered in Harlequin Elipse fabric, chair covered in Harlequin Stream Fabric.

ZIEGFIELD

1930's Art Deco/Streamline
Moderne design with a
strong contemporary
feel.



Ziegfield Dimensions

	Width	Depth	Height
2 Seat Sofa	57" (145cm)	36" (91cm)	31" (78cm)
Large 2 Seat Sofa	68" (173cm)	36" (91cm)	31" (78cm)
3 Seat Sofa	68" (173cm)	36" (91cm)	31" (78cm)
Chair	36 ¹ / ₂ " (93cm)	36" (91cm)	31" (78cm)

Frame: Kiln dried beech, screwed, glued and dowelled
with fully sprung seat and back.

METROPOLIS

A versatile collection of sofas, chairs and corner units reflecting the clean, simple lines of 1930's modernism.



Metropolis Dimensions

	WIDTH	DEPTH	HEIGHT
2 Seat Sofa	54" (137cm)	35" (89cm)	34" (79cm)
2 1/2 Seat Sofa	63" (160cm)	35" (89cm)	34" (79cm)
3 Seat Sofa	79" (201cm)	35" (89cm)	34" (79cm)
Chair	33" (84cm)	35" (89cm)	34" (79cm)

LONG ISLAND

A design originating in the 1950's that fits easily into a contemporary furnishing scheme. The back cushions are normally plain but can be supplied with the optional leather detail for a small extra charge



Long Island Dimensions

	WIDTH	DEPTH	HEIGHT
2 Seat Sofa	54" (137cm)	35" (89cm)	29" (74cm)
2 1/2 Seat Sofa	63" (160cm)	35" (89cm)	29" (74cm)
3 Seat Sofa	81" (206cm)	35" (89cm)	29" (74cm)
Chair	33" (84cm)	35" (89cm)	29" (74cm)

BROOKLANDS

Original design with a 1930's flavour and named after the famous pre-war motor racing track.

Recommended for comfort
- we are adding a special footstool that will change the chair into a Chaise Longue.



Brooklands Dimensions

	WIDTH	DEPTH	HEIGHT
2 Seat Sofa	53" (135cm)	37" (94cm)	36" (91cm)
2 1/2 Seat Sofa	65" (165cm)	37" (94cm)	36" (91cm)
3 Seat Sofa	77" (196cm)	37" (94cm)	36" (91cm)
Chair	35" (89cm)	37" (94cm)	36" (91cm)

SAVOY

Large 1930's style armchair & sofas with a high back. A classic in leather that looks equally good in an appropriate fabric.



Savoy Dimensions

	WIDTH	DEPTH	HEIGHT
Chair	33" (84cm)	36" (91cm)	33" (84cm)
2 Seat Sofa	54" (137cm)	36" (91cm)	33" (84cm)
Large 2 Seat	62" (157cm)	36" (91cm)	33" (84cm)
3 Seat Sofa	75" (190cm)	36" (91cm)	33" (84cm)

PLAZA

Small Art Deco armchair that can be used with our Odeon or Normandie sofas.

Makes a perfect bedroom chair - a small matching 2 seat sofa is available.



Plaza Dimensions

	WIDTH	DEPTH	HEIGHT
Chair	29" (74cm)	35" (89cm)	31" (79cm)
2 Seat Sofa	50" (127cm)	35" (89cm)	31" (79cm)

Classics of The
TWENTIES & THIRTIES
 Evocative Designs of The Charleston Era
 from Scandecor

VALENTINO & BARRYMORE

Valentino Sofa



Design from the Roaring 20's. Elegant but compact sofas and chairs for a cottage, town house or flat. The Valentino will combine well with the Grenadier, Clubman or Harlow. The only difference between the Valentino and Barrymore is the shape of the back. A hardwearing fabric is recommended for both these models

Valentino/Barrymore Chair



3 Seat Barrymore Sofa

Valentino and Barrymore sofas and chairs can be supplied with seat cushions instead of a plain seat if required.



SCANDECOR

20 Castle Street • Brighton BN1 2HD
 Telephone: 01273 820208 Facsimile: 01273 737124
www.artdeco-sofas.com

Dimensions	Width	Depth	Height
Chair	32 ¹ / ₂ " (82cm)	30" (76cm)	31" (79cm)
2 Seat	52 ¹ / ₂ " (133cm)	30" (76cm)	31" (79cm)
Large 2 Seat	62 ¹ / ₂ " (158cm)	30" (76cm)	31" (79cm)
3 Seat	72 ¹ / ₂ " (184cm)	30" (76cm)	31" (79cm)

GARBO



Comfortable club-style sofa with fat Chesterfield-type arms and traditional coil sprung seat and back. Illustrated in distressed leather by Muirhead but looks equally good in fabric.



Dimensions	Width	Depth	Height
Chair	42" (107cm)	35" (89cm)	33" (84cm)
2 Seat	61" (155cm)	35" (89cm)	33" (84cm)
Large 2 Seat	69" (176cm)	35" (89cm)	33" (84cm)
3 Seat	81" (206cm)	35" (89cm)	33" (84cm)

HOWARD



Classic traditional style sofas and chairs. Can be made with a deeper seat for a taller person if required. Shown in a William Morris Linen Union print but looks equally good in velvet or tapestries

Dimensions	Width	Depth	Height
Chair	35" (89cm)	40" (102cm) or 44" (112cm)	31" (79cm)
2 Seat	58" (147cm)	40" (102cm) or 44" (112cm)	31" (79cm)
2 1/2 Seat	66" (168cm)	40" (102cm) or 44" (112cm)	31" (79cm)
3 Seat	75" (191cm)	40" (102cm) or 44" (112cm)	31" (79cm)

VICTORIA



A traditional style settee combining the charm of the Victorian Chesterfield with the comfort of modern upholstery materials and techniques can produce. This settee is softer than the conventional chesterfield as there is no deep buttoning.

Dimensions	Width	Depth	Height
Chair	39" (100cm)	36" (91cm)	29" (74cm)
2 Seat	60" (153cm)	36" (91cm)	29" (74cm)
Large 2 Seat	69" (160cm)	36" (91cm)	29" (74cm)
3 Seat	81" (184cm)	36" (91cm)	29" (74cm)
Large 3 Seat	90" (229cm)	36" (91cm)	29" (74cm)

CHARLESTON



A stylish, traditional design with fat, chesterfield-style arms and a flavour of the 1930's. Feather seat cushions are available as an option.

Dimensions	Width	Depth	Height
Armchair	42" (107cm)	35" (89cm)	33" (84cm)
Small 2 Seat Settee	61" (155cm)	35" (89cm)	33" (84cm)
Large 2 Seat Settee	69" (176cm)	35" (89cm)	33" (84cm)
3 Seat Settee	81" (206cm)	35" (89cm)	33" (84cm)

BRUNSWICK



A perfect reproduction of an early 1920's sofa with matching Club chair. The Brunswick has a classic shape that will look equally good in modern or traditional fabrics. **Wood Finishes** - Any legs or feet in this brochure can be polished in Mahogany, Walnut, Oak, Antique Pine or Yew. Painted finishes available at extra cost

Dimensions	Width	Depth	Height
Chair	33" (84cm)	35" (89cm)	35 1/2" (90cm)
2 Seat	57" (145cm)	35" (89cm)	35 1/2" (90cm)
Large 2 Seat	66" (168cm)	35" (89cm)	35 1/2" (90cm)

HEREFORD

Big, comfortable, high-backed, traditional style sofas and chairs.



Dimensions	Width	Depth	Height
Chair	40" (102cm)	39" (99cm)	37" (94cm)
2 Seat	60" (152cm)	39" (99cm)	37" (94cm)
Large 2 Seat	70" (178cm)	39" (99cm)	37" (94cm)
3 Seat	80" (203cm)	39" (99cm)	37" (94cm)

ADELAIDE



Compact and comfortable - an elegant sofa and armchair which are ideal for a small room, but won't look out of place somewhere more spacious. The chair or sofa can be used individually with other models from our collection, particularly Hereford, Chesterfield and Brunswick.

Dimensions	Width	Depth	Height
Chair	33" (84cm)	35" (89cm)	35½" (90cm)
2 Seat	57" (145cm)	35" (89cm)	35½" (90cm)
Large 2 Seat	66" (168cm)	35" (89cm)	35½" (90cm)

NEW CLUBMAN



Classic 1920's style sofa with swans neck arms, coil sprung back and wooden legs or feet.

Dimensions	Width	Depth	Height
Chair	36" (91cm)	35½" (90cm)	36" (91cm)
2 Seat	58" (147cm)	35½" (90cm)	36" (91cm)
2½ Seat	67" (170cm)	35½" (90cm)	36" (91cm)
3 Seat	77" (195cm)	35½" (90cm)	36" (91cm)

BARRYMORE CLUB SOFA

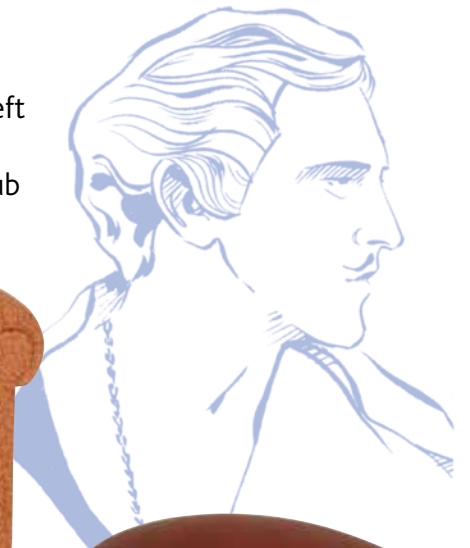
Club Sofa is a larger version of the standard Barrymore, with a deeper seat, higher back and seat cushions. Available with Valentino top if required.



Dimensions	Width	Depth	Height
Chair	32 ¹ / ₂ " (82cm)	32" (80cm)	33" (84cm)
2 Seat	52 ¹ / ₂ " (133cm)	32" (80cm)	33" (84cm)
Large 2 Seat	62 ¹ / ₂ " (158cm)	32" (80cm)	33" (84cm)
3 Seat	72 ¹ / ₂ " (184cm)	32" (80cm)	33" (84cm)



Version shown left is large 2 seat Valentino Club Sofa.



Valentino/Barrymore Footstool (special sizes made to order)

Length	Width	Height
20"(51cm)	20"(51cm)	14" (36cm)
40"(102cm)	20"(51cm)	14" (36cm)



Valentino or Barrymore Club Armchair

CLASSIC TRADITIONAL SOFAS & CHAIRS

VALENTINO / BARRYMORE

	"A"	"B"	"C"	"D"	"E"	LEATHER
3 Seat Sofa	£895.00	£945.00	£995.00	£1040.00	£1085.00	£1775.00
2½ Seat Sofa	£835.00	£880.00	£920.00	£ 965.00	£1005.00	£1625.00
2 Seat Sofa	£780.00	£815.00	£850.00	£ 875.00	£ 920.00	£1495.00
Armchair	£655.00	£685.00	£715.00	£ 750.00	£ 780.00	£1215.00
Stool	£295.00	£305.00	£315.00	£ 330.00	£ 340.00	£ 382.50

Barrymore/Valentino Club Sofa (with seat cushions): Add 5% to above prices

GARBO / CLUBMAN / HOWARD

	"A"	"B"	"C"	"D"	"E"	LEATHER
3 Seat Sofa	£1135.00	£1199.00	£1270.00	£1335.00	£1399.00	£2180.00
2½ Seat Sofa	£1025.00	£1080.00	£1135.00	£1195.00	£1250.00	£1925.00
2 Seat Sofa	£ 945.00	£ 999.00	£1050.00	£1105.00	£1160.00	£1670.00
Armchair	£ 765.00	£ 805.00	£ 845.00	£ 885.00	£ 925.00	£1399.00

Extras: Bun Feet £45 per set.

HEREFORD RANGE

	"A"	"B"	"C"	"D"	"E"	LEATHER
3 Seat Sofa	£1220.00	£1310.00	£1399.00	£1495.00	£1590.00	£2240.00
2½ Seat Sofa	£1080.00	£1160.00	£1240.00	£1320.00	£1399.00	£1940.00
2 Seat Sofa	£ 970.00	£1040.00	£1105.00	£1170.00	£1235.00	£1735.00
Armchair	£ 755.00	£ 799.00	£ 850.00	£ 895.00	£ 945.00	£1330.00

KNOLE

	"A"	"B"	"C"	"D"	"E"	LEATHER
Large Sofa	£1295.00	£1380.00	£1465.00	£1550.00	£1635.00	PRICE ON
Small Sofa	£1140.00	£1215.00	£1290.00	£1360.00	£1480.00	APPLICATION

HOWARD

	"A"	"B"	"C"	"D"	"E"	LEATHER
3 Seat Sofa	£1140.00	£1215.00	£1290.00	£1360.00	£1435.00	£2135.00
2½ Seat Sofa	£ 995.00	£1075.00	£1135.00	£1199.00	£1260.00	£1875.00
2 Seat Sofa	£ 940.00	£ 995.00	£1050.00	£1105.00	£1160.00	£1695.00
Armchair	£ 735.00	£ 775.00	£ 820.00	£ 865.00	£ 910.00	£1345.00

PORTLAND / CHARLESTON

	"A"	"B"	"C"	"D"	"E"	LEATHER
3 Seat Sofa	£1295.00	£1380.00	£1465.00	£1550.00	£1625.00	£2240.00
2½ Seat Sofa	£1095.00	£1160.00	£1225.00	£1290.00	£1375.00	£1940.00
2 Seat Sofa	£ 995.00	£1065.00	£1120.00	£1175.00	£1235.00	£1735.00
Armchair	£ 750.00	£ 805.00	£ 845.00	£ 885.00	£ 925.00	£1330.00

CHESTERFIELD

	"A"	"B"	"C"	"D"	"E"	LEATHER
3 Seat Sofa	£1330.00	£1405.00	£1475.00	£1550.00	£1620.00	£2295.00
2½ Seat Sofa	£1195.00	£1255.00	£1315.00	£1375.00	£1435.00	£2095.00
2 Seat Sofa	£1090.00	£1145.00	£1195.00	£1250.00	£1299.00	£1940.00
Chair	£ 810.00	£ 850.00	£ 890.00	£ 930.00	£ 970.00	£1475.00

Extras: Bun Feet £45 per set.

BLLENHEIM CHESTERFIELD

	"A"	"B"	"C"	"D"	"E"	LEATHER
3 Seat Sofa	£1420.00	£1470.00	£1525.00	£1585.00	£1640.00	£2330.00
2½ Seat Sofa	£1305.00	£1355.00	£1405.00	£1455.00	£1499.00	£2155.00
2 Seat Sofa	£1220.00	£1295.00	£1340.00	£1385.00	£1430.00	£2050.00
Armchair	£ 950.00	£ 985.00	£1015.00	£1060.00	£1095.00	£1590.00

Extras: Bun Feet £45 per set.

VICTORIA CHESTERFIELD

	"A"	"B"	"C"	"D"	"E"	LEATHER
3 Seat Sofa	£1080.00	£1155.00	£1230.00	£1295.00	£1370.00	£1990.00
2½ Seat Sofa	£ 965.00	£1025.00	£1085.00	£1145.00	£1199.00	£1799.00
2 Seat Sofa	£ 870.00	£ 915.00	£ 970.00	£1015.00	£1070.00	£1665.00
Armchair	£ 689.00	£ 725.00	£ 755.00	£ 795.00	£ 835.00	£1310.00

Extras: Bun Feet £45 per set.

BRUNSWICK

	"A"	"B"	"C"	"D"	"E"	LEATHER
2½ Seat Sofa	£930.00	£990.00	£1040.00	£1090.00	£1140.00	£1795.00
2 Seat Sofa	£845.00	£895.00	£ 935.00	£ 975.00	£ 999.00	£1665.00
Armchair	£695.00	£740.00	£ 775.00	£ 805.00	£ 835.00	£1250.00

ADELAIDE / MONTAGUE

	"A"	"B"	"C"	"D"	"E"	LEATHER
2½ Seat	£870.00	£935.00	£ 990.00	£1045.00	£1095.00	£1795.00
2 Seat	£820.00	£870.00	£ 920.00	£ 975.00	£1015.00	£1665.00
Armchair	£650.00	£680.00	£ 720.00	£ 750.00	£ 795.00	£1250.00

TRADITIONAL CHAIRS AND SOFAS

	"A"	"B"	"C"	"D"	"E"	LEATHER
Chaise Longue	£835.00	£870.00	£899.00	£945.00	£980.00	£1595.00
Victorian Daybed	£665.00	£695.00	£730.00	£755.00	£785.00	£1425.00
Clementina Chair	£625.00	£651.00	£675.00	£699.00	£730.00	£1150.00
Emily Chair	£630.00	£660.00	£690.00	£725.00	£750.00	£1150.00
Queen Anne Wing Chair	£730.00	£760.00	£790.00	£810.00	£850.00	£1320.00
Gents Balloon Back Chair	£520.00	£550.00	£550.00	£575.00	£590.00	£ 780.00
Ladies Balloon Back Chair	£475.00	£495.00	£505.00	£520.00	£530.00	£ 720.00
Chippendale Wing Chair (plain)	£695.00	£725.00	£755.00	£785.00	£820.00	£1295.00
Chippendale Wing Chair (buttoned)	£730.00	£760.00	£790.00	£810.00	£850.00	£1320.00

BERMUDA

	"A"	"B"	"C"	"D"	"E"	
3 Seat Settee	£1285.00	£1385.00	£1470.00	£1565.00	£1655.00	
2½ Seat Sofa	£1135.00	£1215.00	£1295.00	£1370.00	£1450.00	
2 Seat Sofa	£1015.00	£1075.00	£1140.00	£1199.00	£1265.00	

Extras: Wooden Feet £45

SOFA BEDS: RITZ, ODEON, MIAMI, ROXY, NORMANDIE

	"A"	"B"	"C"	"D"	"E"	LEATHER
	£1120.00	£1175.00	£1235.00	£1290.00	£1345.00	£1985.00

GARBO, CLUBMAN, BARRYMORE

	"A"	"B"	"C"	"D"	"E"	LEATHER
	£1135.00	£1195.00	£1255.00	£1315.00	£1375.00	£1985.00

BROOKLANDS, DALLAS, PORTLAND, CAPITOL

	"A"	"B"	"C"	"D"	"E"	LEATHER
	£1180.00	£1220.00	£1295.00	£1370.00	£1395.00	£2025.00

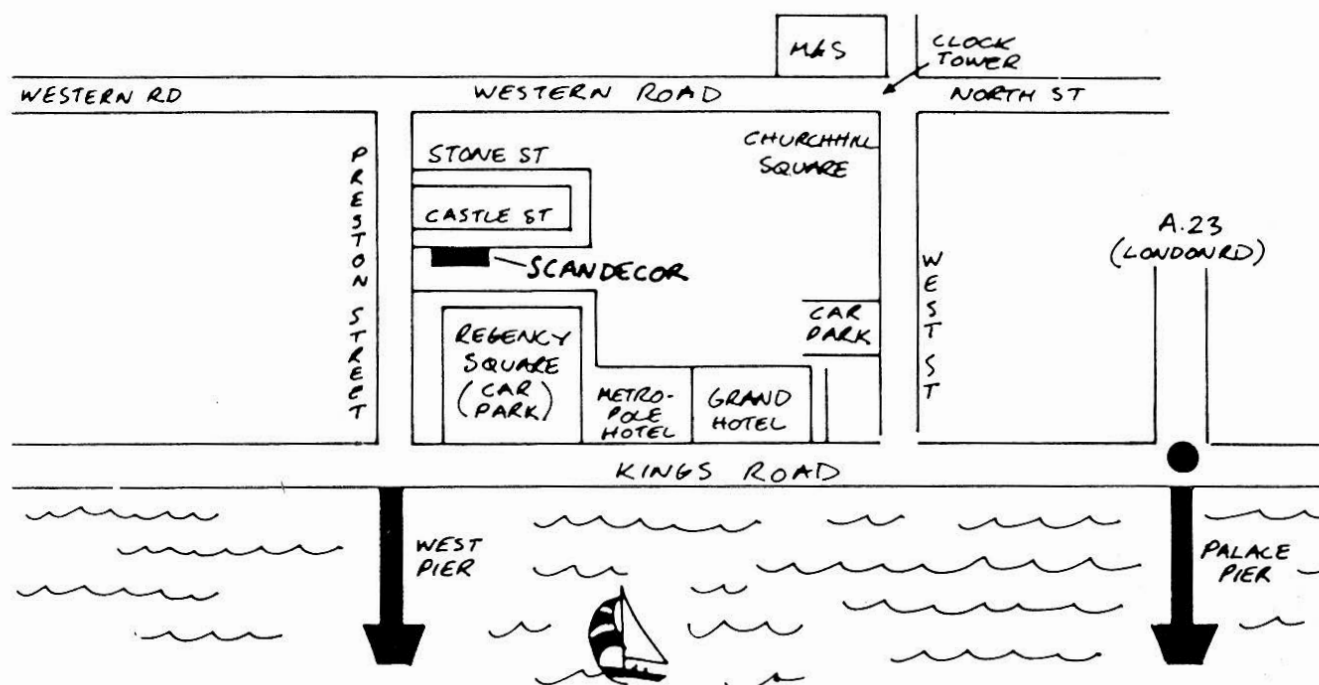
NOTE: All above prices are for a 2½ seat sofa with a 120cm double bed. Larger sofa beds with 140cm and 150cm beds are available. Prices on request.

DELIVERY CHARGES

Delivery can be arranged anywhere in United Kingdom, Europe or Scandinavia. Delivery prices quoted here are approximate - exact quotations supplied on request. Delivery charges are roughly as follows: London £65, Home Counties £60-£70, Midlands and Northern England £70-£80, West Country £75-£80, Scotland £90, Wales £80-£85. All prices plus V.A.T. where applicable. Prices given for Northern Ireland, Isle of Man, Channel Islands and all European destinations. All deliveries by experienced specialist furniture carriers.

SHOWROOM:

Detailed information on any of our products can be obtained from our sales office (01273 820208). Our showroom is open 10.00 am - 5.30 pm Monday - Saturday, closed Sunday. All our designs are normally on display. If you would like directions on how to reach our showroom, avoiding the A23 into Brighton, please phone us. The rough sketch map below will show you the location - we are quite near to the seafront and the derelict West Pier. We would suggest you try to park in the Regency Square car park (2 minutes from showroom) or any of the town centre car parks signposted from the coast road. If you are travelling a long distance to visit our showroom, we would advise you to phone in advance to make sure the showroom will be open. Brighton is an interesting town for a day out or week-end break. There is plenty to see apart from the well known tourist attractions such as the Royal Pavilion, The Lanes and the Palace Pier, with plenty of small interesting specialist shops and an abundance of Restaurants and Cafe Bars.



A MATTER OF CONFIDENCE

There is no better recommendation than a satisfied customer. The selection below is from some of our customers who took the trouble to write and say how pleased they were with their purchase. We always welcome any potential purchasers to our showroom but the letters below are from customers who placed orders having only seen the brochure and website.

Dear Mr Dove,

We have received our sofa safely and are absolutely delighted with it. It surpasses my expectations and is exactly the right colour for our "make-over" of the lounge. We were most impressed by your response to my enquiry and in addition you were the only firm willing to arrange delivery to the Isle of Wight. You have two very satisfied customers.

Margaret Lawrence, East Cowes, Isle of Wight.

To All at Scandecor,

Thank you so much for our new suite - I still can't believe we have such a fabulous set of furniture. The quality and attention to details is superb (not a word that gets used much in our house). I have really enjoyed the whole process, choosing fabrics and being kept informed.

Sil Devilly, Sheffield.

Dear Caroline,

We moved to Eastbourne 8 years ago and I bought new sitting room furniture but nothing seemed right somehow. Then I saw your advert in the Telegraph and came to your Aladdins cave of classic sofa delights and thanks to your tireless encouragement and spot-on advice, we are all sitting comfortably on our Manhattan sofas.

Vivienne Morris, Eastbourne.

Dear Caroline,

We recently purchased a pair of Roxy sofas and just wanted to let you know how pleased we are with them. Not only are they stunning and such quality but they are incredibly cosy as well. Our spoiled greyhounds love them as well. We also wanted to thank you for your outstanding customer service - we really felt your shop goes the extra mile and it was a pleasure from start to finish.

Mandy Sebat and Charles Bladon.

Dear Scandecor,

Just e-mailing to let you know how thrilled we are with our Astoria sofas. Many thanks for your care and attention to detail and for arranging the delivery so efficiently. You have provided us with exceptional service.

Sue & Ed Duffy, Dover.

Dear Caroline & Team,

Just wanted to let you know we are thrilled with our sofas delivered recently. The delivery guys were great but most of all we are delighted with the quality and comfort of the furniture. As you know it has taken us a while to get these sorted and with your patience, attention to detail, experience and expertise we have achieved it.

Peter and Esther Van Delft, Devon.

Thank you again for the sofas, chairs and footstool; they really are even better than we imagined they would be. It is so lovely to find a company that still produces these designs and to deal with a real family firm which still offers a genuine personal service.

Ian Gooch and Neil Kittle, Norfolk.

Dear Scandecor,

Thank you very much for all the thought and hard work which went into our sofa. My daughter and I are delighted with it; it is every bit as comfortable as I had hoped and most important, the compact design fits beautifully into our very small sitting room.

Aleda Erskine, Highgate, London.

Dear Caroline,

Just a few lines to say how delighted we were with our Ritz 3-piece suite and stool, so much so that we are placing an order for another stool. From the initial order to the final delivery we received nothing other than "old fashioned" first-class customer service from you and your firm, and at what we consider to be a very fair price.

Richard and Brenda Boyle, Devon.

Attention Scandecor,

I would like to say how happy I am with my Knole sofa - it's really lovely and incredibly comfortable. I was so impressed with all the trouble you went to, to ensure I was happy with the outcome. It is so unusual to find such personalised professional service these days.

Merrin Canning.

Dear Caroline,

Just a quick note to say how pleased we are with our 4 seat Odeon sofa - it's really comfortable and it looks great. You were so patient and helpful with fabric samples when we were trying to decide what covering and piping to use. We'll certainly be recommending you to all our friends.

Peter and Katherine Hall, Hastings.

Fabric & Leather Samples

All our sofas and chairs are custom-made to order. You can choose from a very wide selection of fabrics and over 100 leather colours. We will send you samples if you give us some information on your requirements. Please complete the form below and post or e-mail to us.

Sofas/Chairs wanted:

Fabric or Leather:

Colours wanted:

Colours not wanted:

Plain or patterned:

Leather only: Plain, Distressed or Semi Antique:

SEND TO:

Name:

Address:

.....

Telephone No.:

E-mail:

Allow 3-5 days for samples to arrive.

SCANDECOR

20 Castle Street, Brighton BN1 2HD
Telephone Brighton (01273) 820208
email:scandecor@btconnect.com
Fax: (01273) 737124

